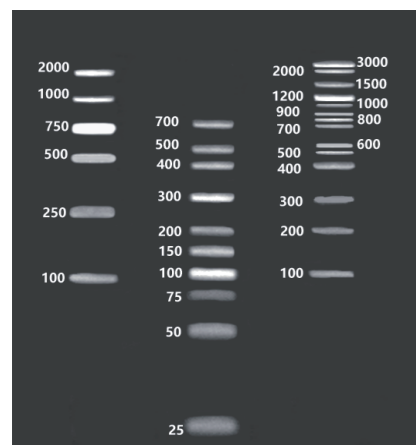


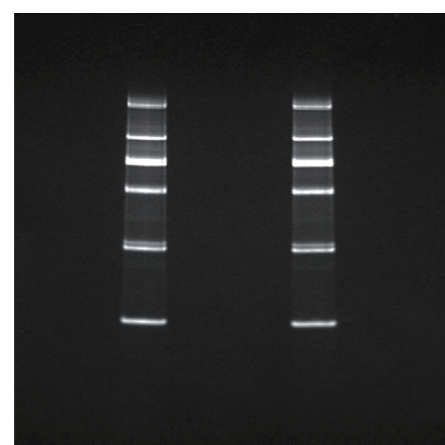
Star Products

▼ Nucleic Acid Precast Gels PAGE / Agarose gel

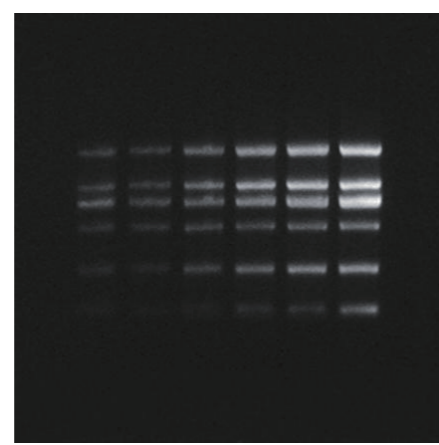
UREA-TBE PAGE, 10% (E301U10T)



TBE PAGE, 5% (E301T5T)



Agarose Gel, 1% (PMA2019A-1-3E)



Highlights

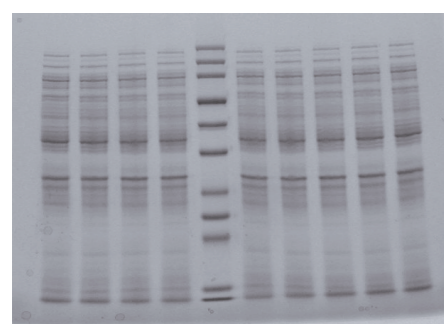
- **Stable & Reliable:** Automated casting, high lot-to-lot consistency
- **Fast & Efficient:** 50-75 min run at 150 V
- **Easy Handling:** Special cassette design, opens easily with a blade
- **Wide Compatibility:** Fully compatible with major mini electrophoresis tanks

Highlights

- **Stable:** Automated casting, high consistency
- **Convenient:** Ready-to-use, patented tray
- **Safe:** Non-toxic dyes, sharp bands
- **Comprehensive:** TAE/TBE, various concentrations
- **Shelf Life:** 6 months at 4°C

▼ Protein Precast Gels Tris-Gly PAGE

Tris-Gly 12% (GSG2001-12T)

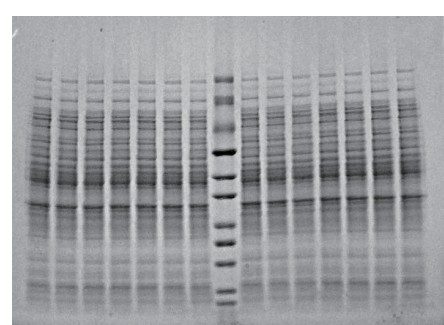


Highlights

- **Stable & Reliable:** Automated casting, high batch-to-batch consistency
- **Clean Background:** Glass/coated plastic plates, low protein non-specific adsorption
- **Fast & Efficient:** Runs in 20 min with Ultra-Fast Electrophoresis Buffer (Cat.#: EZB2006)
- **Flexible Application:** SDS-free gels, suitable for both denaturing and native electrophoresis
- **Easy Handling:** Special cassette design, opens easily with a blade
- **Wide Compatibility:** Fully compatible with major mini electrophoresis tanks
- **Comprehensive Options:** Various fixed-concentration gels, 4-15% and 4-20% gradients, and custom formulations available

▼ Protein Precast Gels Hepes-Tris PAGE

Hepes-Tris 4-20% (GSH2001-420T)

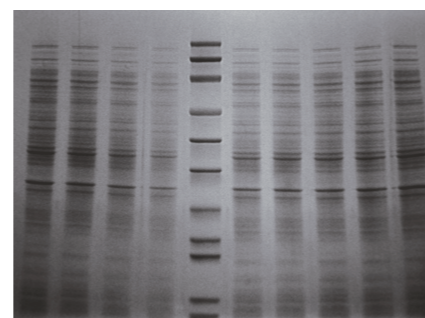


Highlights

- **Stable & Reliable:** Automated casting, high batch-to-batch consistency
- **Clean Background:** Glass plates, low non-specific protein adsorption
- **Fast & Efficient:** 40-50 min run at 150 V
- **Flexible Application:** SDS-free gels, suitable for denaturing and native electrophoresis
- **Easy Handling:** Special cassette design, opens easily with a blade
- **Wide Compatibility:** Fully compatible with major mini electrophoresis tanks
- **Comprehensive Options:** Various fixed-concentration gels, 4-15% and 4-20% gradients, and custom formulations available

▼ Protein Precast Gels Bis-Tris PAGE

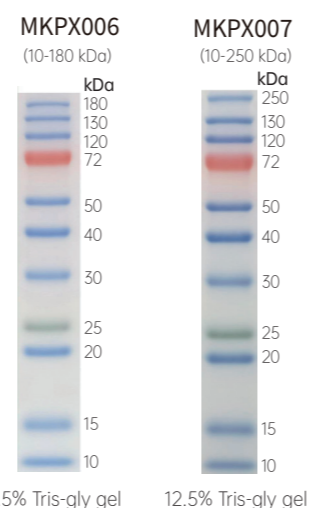
Bis-Tris 12% (GSB2001-12T)



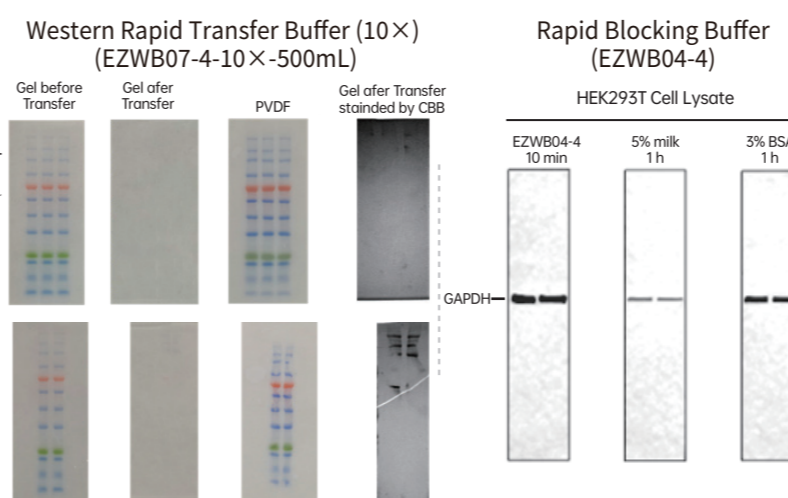
Highlights

- **Stable & Reliable:** Automated casting, high batch-to-batch consistency
- **Clean Background:** Glass plates, low non-specific protein adsorption
- **Fast & Efficient:** 40-50 min run at 150 V
- **Flexible Application:** SDS-free gels, suitable for denaturing and native electrophoresis
- **Easy Handling:** Special cassette design, opens easily with a blade
- **Wide Compatibility:** Fully compatible with major mini electrophoresis tanks
- **Comprehensive Options:** Various fixed-concentration gels, 4-15% and 4-20% gradients, and custom formulations available

▼ Protein Marker Prestained Marker



▼ Immunoblotting Transfer / Blocking



Highlights

- **Visible Process:** Real-time monitoring of electrophoresis and transfer, no staining required
- **Tri-Color Indicator:** Green (25 kDa), orange-red (72 kDa), and blue for others, easy identification
- **Broad Range:** Covers 10-180/250 kDa with 11 bands
- **Accurate Reference:** Reliable molecular weight determination, confident results

Highlights

- **Safe & Eco-Friendly:** Ethanol replaces toxic methanol
- **Fast & Time-Saving:** 25-30 min wet transfer, significantly improved efficiency
- **Low Heat & High Efficiency:** Minimal heat generation ensures transfer quality
- **Built-In Ice Bath:** No external setup, easy operation

Highlights

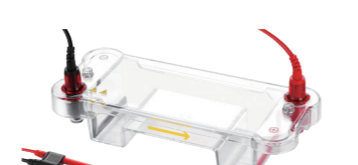
- **Fast & Efficient:** Blocks in just 10 min, significantly shortens experiment time
- **Ultra-Low Background:** Protein-free, avoids potential interference
- **Wide Compatibility:** Suitable for various immunoassays including WB, IHC, ELISA, IF

▼ Electrophoresis Equipments Power Supply / Electrophoresis Tank / Transfer Tank

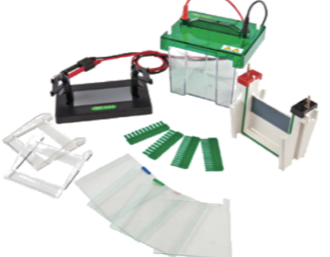
WSHT-Universal Electrophoresis Power Supply (HTES1003)



WSHT-liteDNA Universal Horizontal Electrophoresis Cell (HTES1007)



WSHT-SCZ2+ Mini-Protein Vertical Electrophoresis Cell (HTES2001-P)



miniBLOT Vertical Blot (HTES1005)



Shanghai Wansheng Haotian Biotechnology Inc.

service@wshtbio.com

4006-021-390

www.wshtbio.com



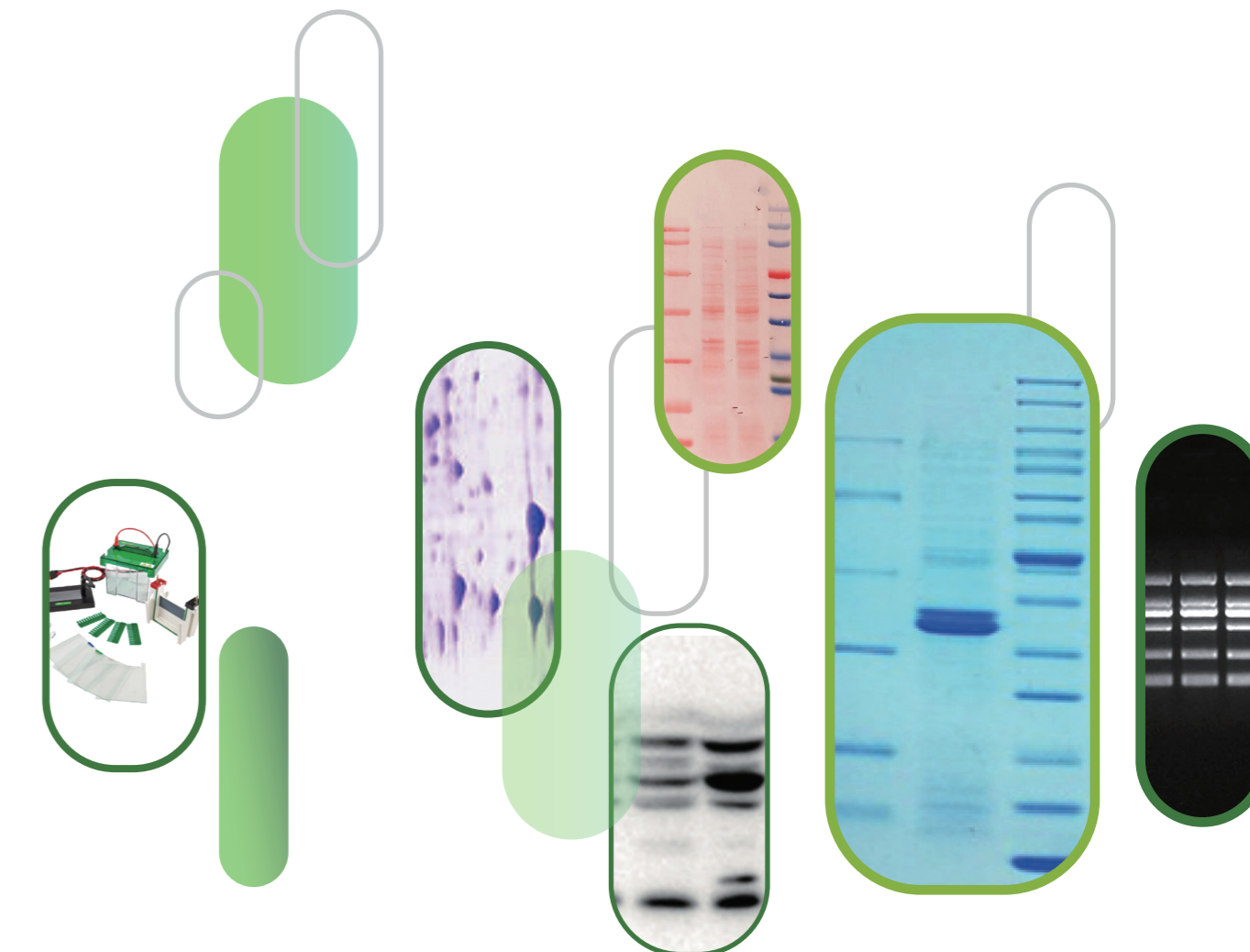
Subscription Account

Channels

WSHT Biotechnology

Electrophoresis and Immunoblotting Specialist

Nucleic Acid Electrophoresis | Protein Electrophoresis | Immunoblotting | Electrophoresis Equipments



End-to-end protection for your protein research

http://www.wshtbio.com

About Us

“**Shanghai Wansheng Haotian Biotechnology Inc.** is a high-tech enterprise specializing in electrophoresis and immunoblotting reagents and equipment, integrating R&D, production, sales, and supporting services. Relying on its wholly-owned subsidiary, Anhui Haotuo, which boasts a 2,700m² production base and standardized laboratories, the company has established a complete system from R&D to large-scale production, with **over 2,000 SKUs**.

Since 2016, the company has successfully developed a series of electrophoresis products. Among them, **precast protein gels**, as core products, have become one of the leading brands in the domestic market, trusted by numerous prestigious universities and research institutions both domestically and internationally. We are committed to providing research institutions and biomedical enterprises with stable, ready-to-use, and customizable high-quality products, making electrophoresis and immunoblotting simpler and more reliable.

The production base has obtained **ISO9001 quality management system certification**, ensuring quality assurance at every step. Adhering to the philosophy of "customer first," we continuously optimize our technology development and service processes, providing high-quality, efficient, and sustainable support for life science research and the development of the bio-industry.



Stability

Consistent Quality, Reliable Supply



Comprehensive

Product Line Covers the Entire Workflow of Electrophoresis and Western Blot



Customization

Personalized Product Customization Services Available



Service

Professional Team, Pre-Sales Optimization, After-Sales Support



Product Line Overview

1 **Nucleic Acid Electrophoresis** ★

- Nucleic Acid Precast Gels
- DNA Molecular Weight Markers
- Nucleic Acid Loading Buffers
- Nucleic Acid Electrophoresis Buffers
- Nucleic Acid Stains/Dyes
- Blue Light Gel Cutting Imagers

6 **RNA-Related**

- RNA Extraction and Purification
- RNAse Protection Assay
- RNA Interference (RNAi)
- RNA In Situ Hybridization
- Others

2 **Protein Electrophoresis** ★

- Precast Protein Gels
- Gel Preparation Kits
- Reagents for Gel Preparation
- Protein Molecular Weight Markers
- Protein Loading Buffers
- Protein Electrophoresis Buffers
- Protein Staining and Destaining

7 **DNA-Related**

- Reverse Transcription
- DNA Extraction and Purification
- DNA Amplification
- Enzyme Digestion and Ligation
- DNA Transformation
- Others

3 **Protein Sample Preparation**

- Enzyme Inhibitors
- Protein Extraction
- Protein Quantification

8 **Electrophoresis Equipments** ★

- Electrophoresis Power Supply
- Horizontal Electrophoresis Tank
- Vertical Electrophoresis Tank
- Transfer Tank
- Accessories

4 **Immunoblotting** ★

- Membrane Transfer
- Blocking
- Incubation
- Detection
- Ultra-Fast Western Blot Kit
- Others

9 **Other Reagents**

- Biochemical Reagents
- Buffers
- Stock Peptides

5 **Protein Interaction**

- IP/Co-IP Kit
- Immnomagnetic Beads

10 **in vitro Diagnostics**

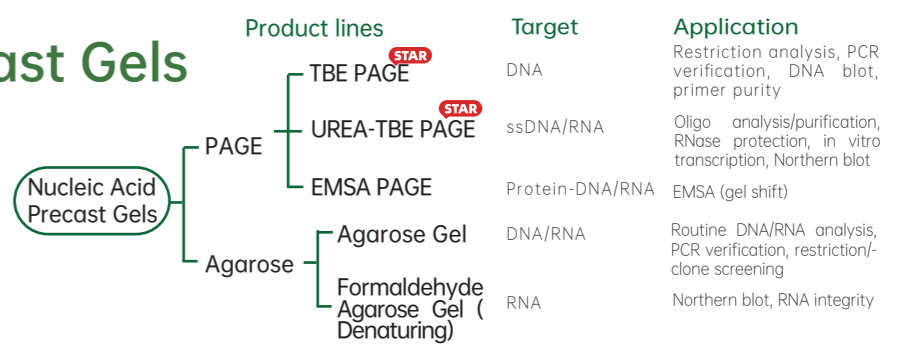
- LDL Subfraction Detection System

Core Product Lines

Nucleic Acid Precast Gels

Highlights: Stable and Reliable · Ready-to-Use · PAGE/Agarose Available · Native/Denaturing Available · Suitable for RNA/DNA Analysis

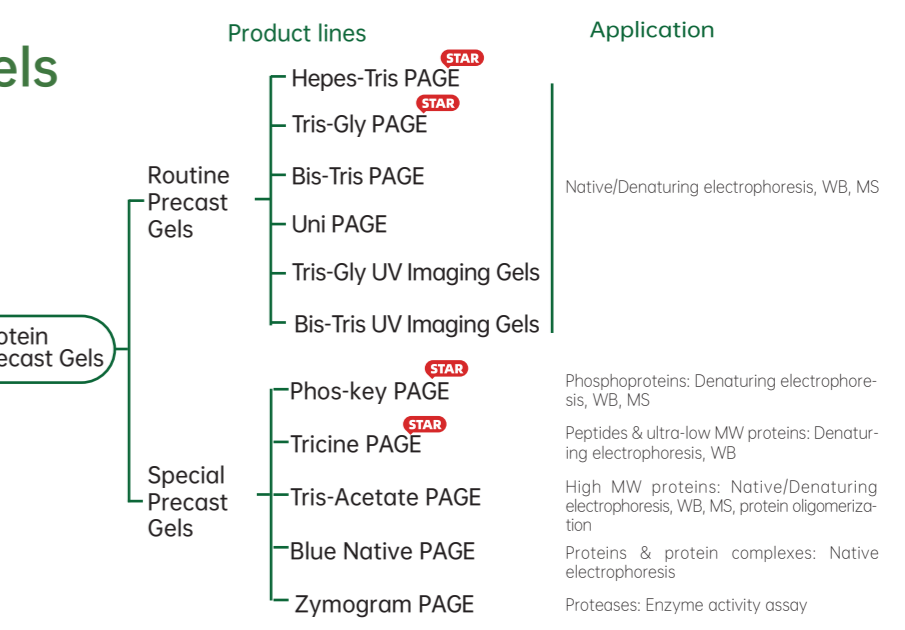
Star Products: UREA-TBE PAGE, 10% (E301U10T), TBE PAGE, 5% (E301T5T)



Protein Precast Gels

Highlights: Full-scenario coverage · 10+ gel types · Adapts to diverse samples/applications · Ready-to-use · Low lot-to-lot variation · Native/denaturing options · Broad compatibility · Flexible customization

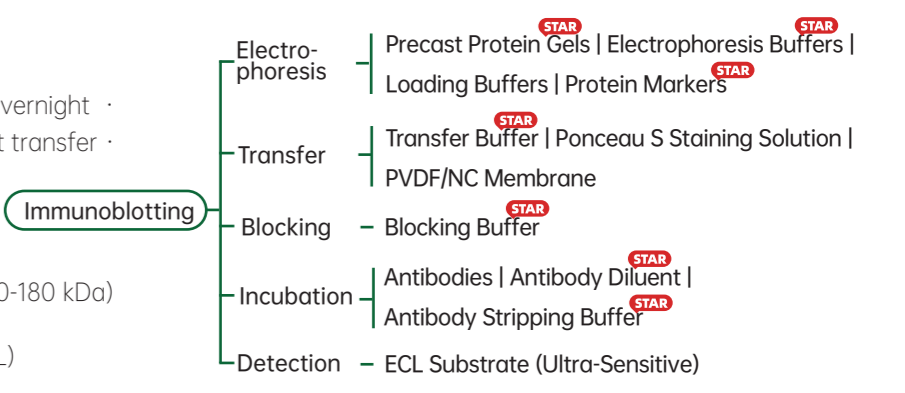
Star Products: Hepes-Tris Precast Gels; Tris-Glycine Precast Gels; Bis-Tris Precast Gels; Tricine Precast Gels



Immunoblotting

Highlights: One-stop rapid WB solution · No overnight · 20-min ultra-fast electrophoresis · 20-min ultra-fast transfer · Blocking-free · High-sensitivity detection

Star Products: TriColor Prestained Broad Range Protein Marker (10-180 kDa) (MKPX006-250μL)
Rapid Transfer Buffer (10×) (EZWB07-4-10×-500mL)
Universal Rapid Blocking Buffer (EZWB04-4)
Western Blocking-Free Universal Antibody Diluent (EZWB06-4-500mL)



Electrophoresis Equipments

Highlights: Power Supply · Horizontal Tank · Vertical Tank · Transfer Tank · Accessories · Compatible with Major Precast Gels · Flexible Configuration · High Cost-Effectiveness

Star Products: WSHT-SCZ2+ Mini-Protean Vertical Electrophoresis Cell (HTES2001-P)