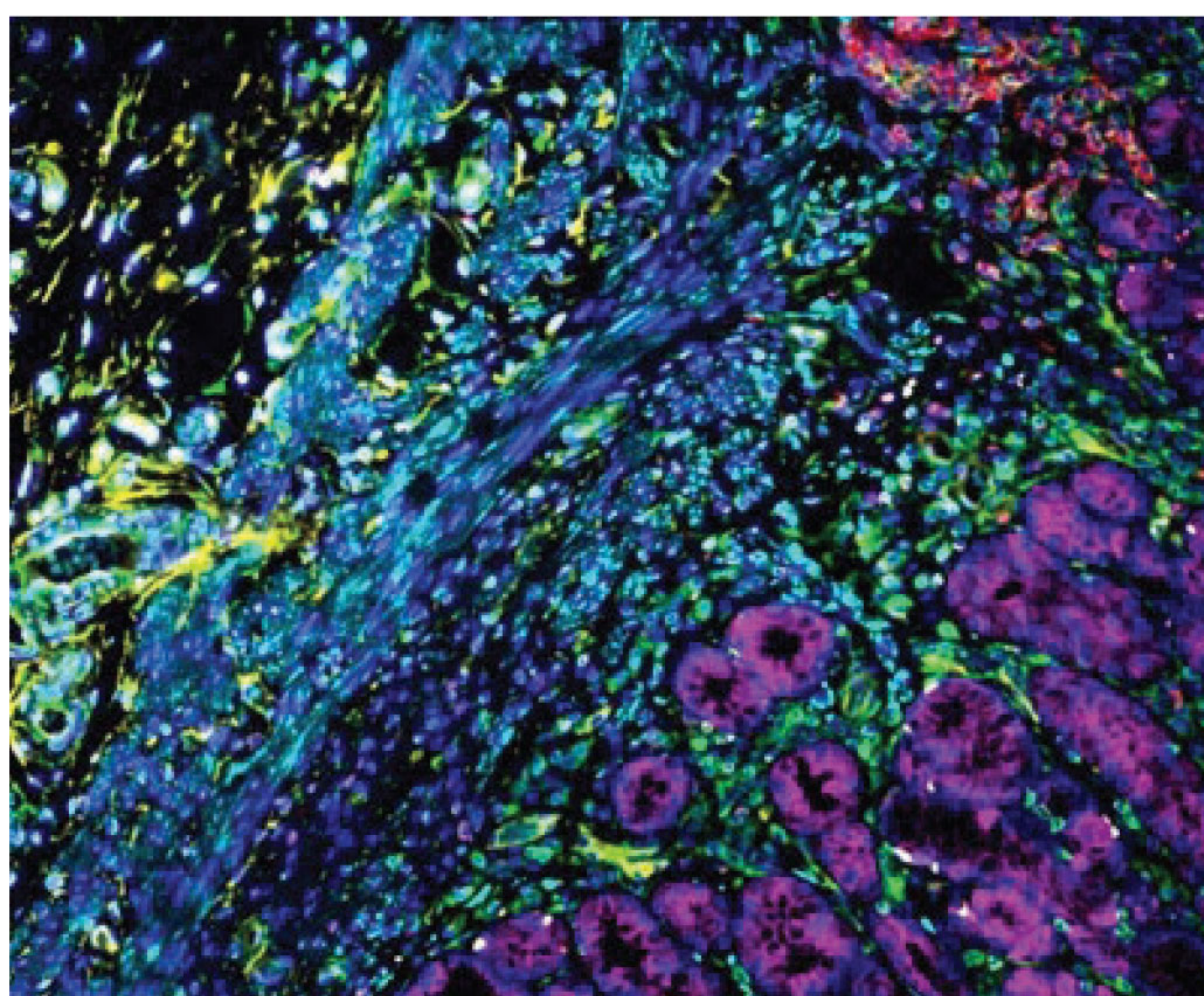


# VectaPlex™

## Antibody Removal Kit

### Your path to simplified multiplexing starts with VectaPlex™

This ready-to-use kit is designed to remove antibodies and other non-covalently bound detection reagents from Formalin-Fixed Paraffin-Embedded (FFPE) tissue sections in immunofluorescence (IF) or tyramide signal amplification (TSA) staining workflows.



Composite image generated from individual images taken during six rounds of immunofluorescence staining using VectaPlex. FFPE stomach; six mouse primary antibodies (CD20 (Red), CD34 (Yellow), Desmin (Cyan), AE1/AE3 (Magenta), CD3 (Grey), Vimenn (Green)) detected with DyLight™ 488 horse anti-mouse IgG. Blue indicates DAPI stain. Vector® TrueView® Autofluorescence Quencher Kit applied to suppress autofluorescence.

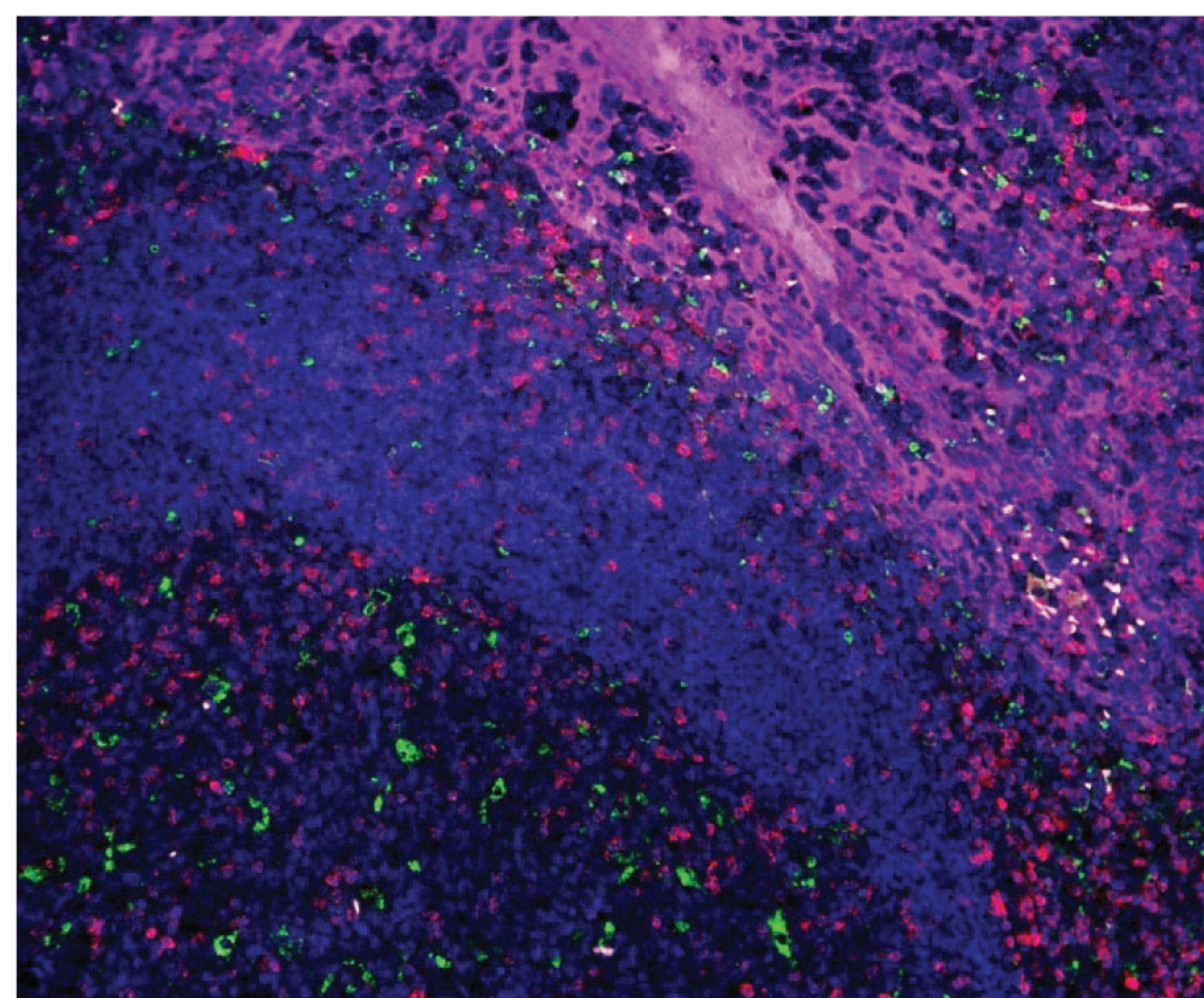
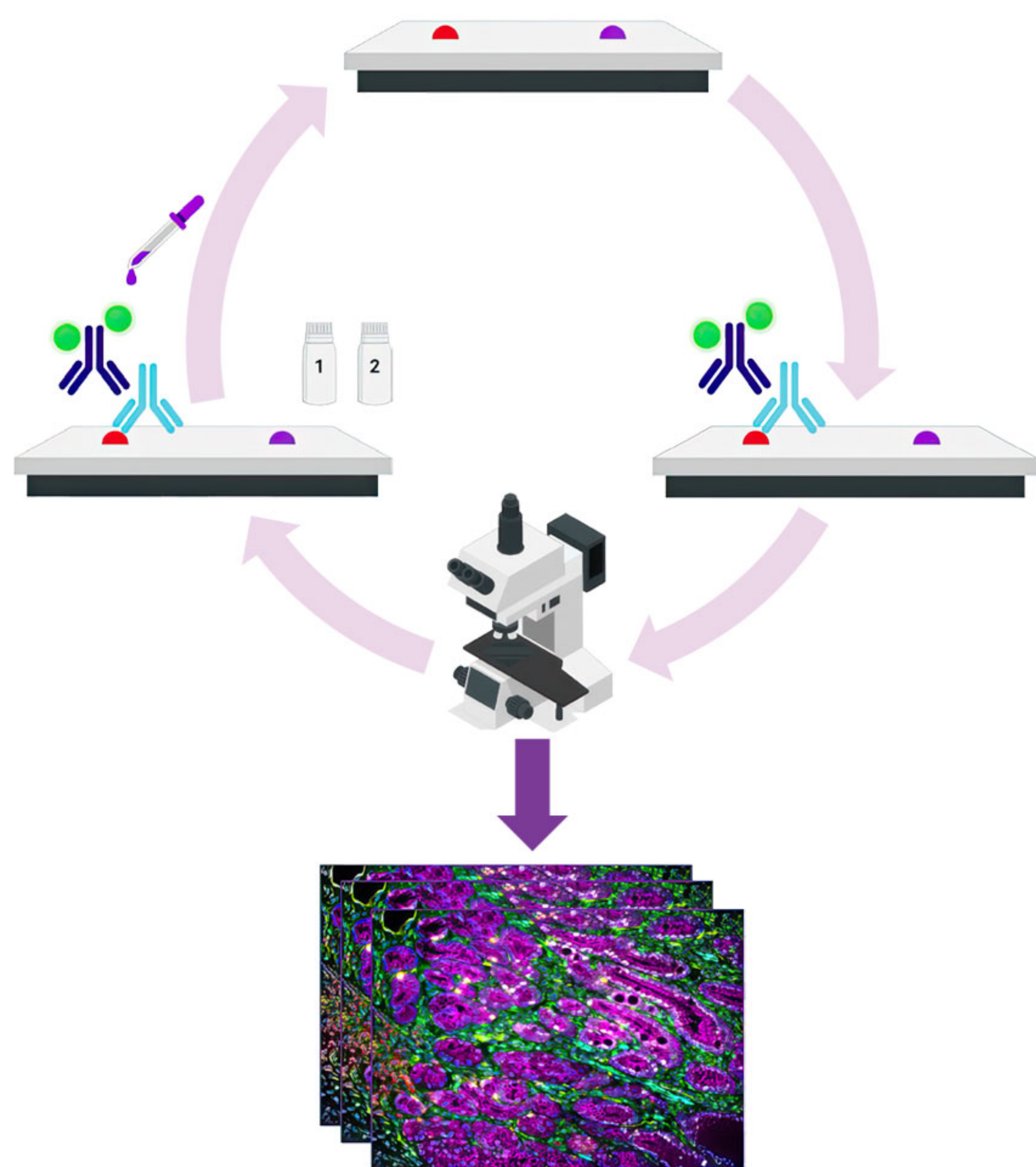


Image captured after completion of 3 rounds of tyramide staining. The VectaPlex Antibody Removal Kit was used after each round. FFPE tonsil; 3 mouse primary antibodies (CD3 (Red), CD68 (Green), AE1/AE3 (Purple)); detected using Opal 3-Plex TSA Manual Detecon Kit. Blue indicates DAPI stain.

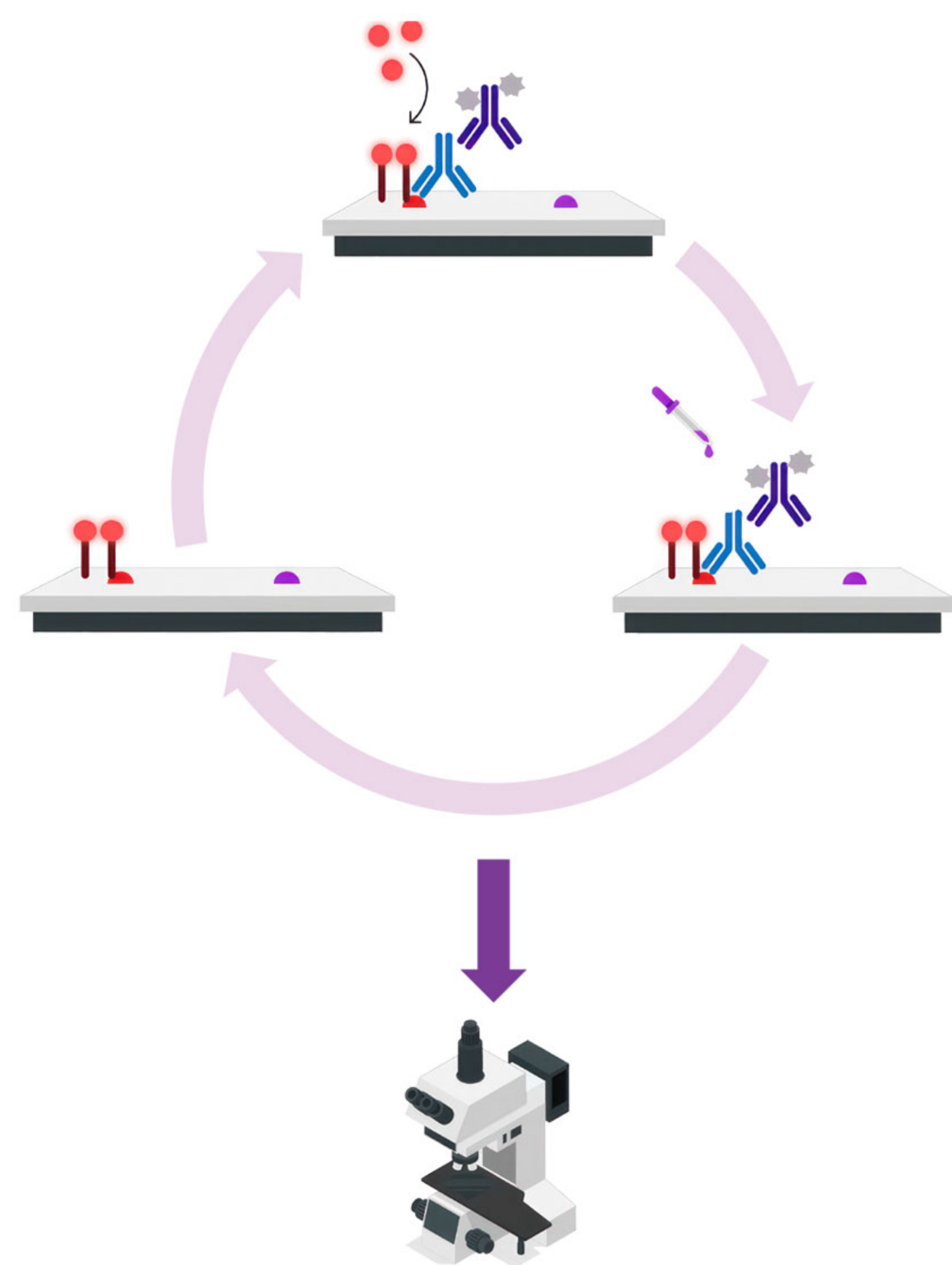
### Why VectaPlex?

- ✓ Obtain more spatial biomarker information from each tissue section.
- ✓ Detect 7+ targets in a single tissue using two-color fluorescent imaging and standard IF reagents.
- ✓ Multiplex at room temperature with minimal tissue damage or loss of antigenicity.
- ✓ Preserve precious sample in IF and TSA, including sensitive tissues such as lung, skin, and breast.
- ✓ Stain with multiple primaries from the same species and a single secondary without cross-reactivity.
- ✓ Reduce the need for optimization of the sequence in which antibodies are bound during TSA.

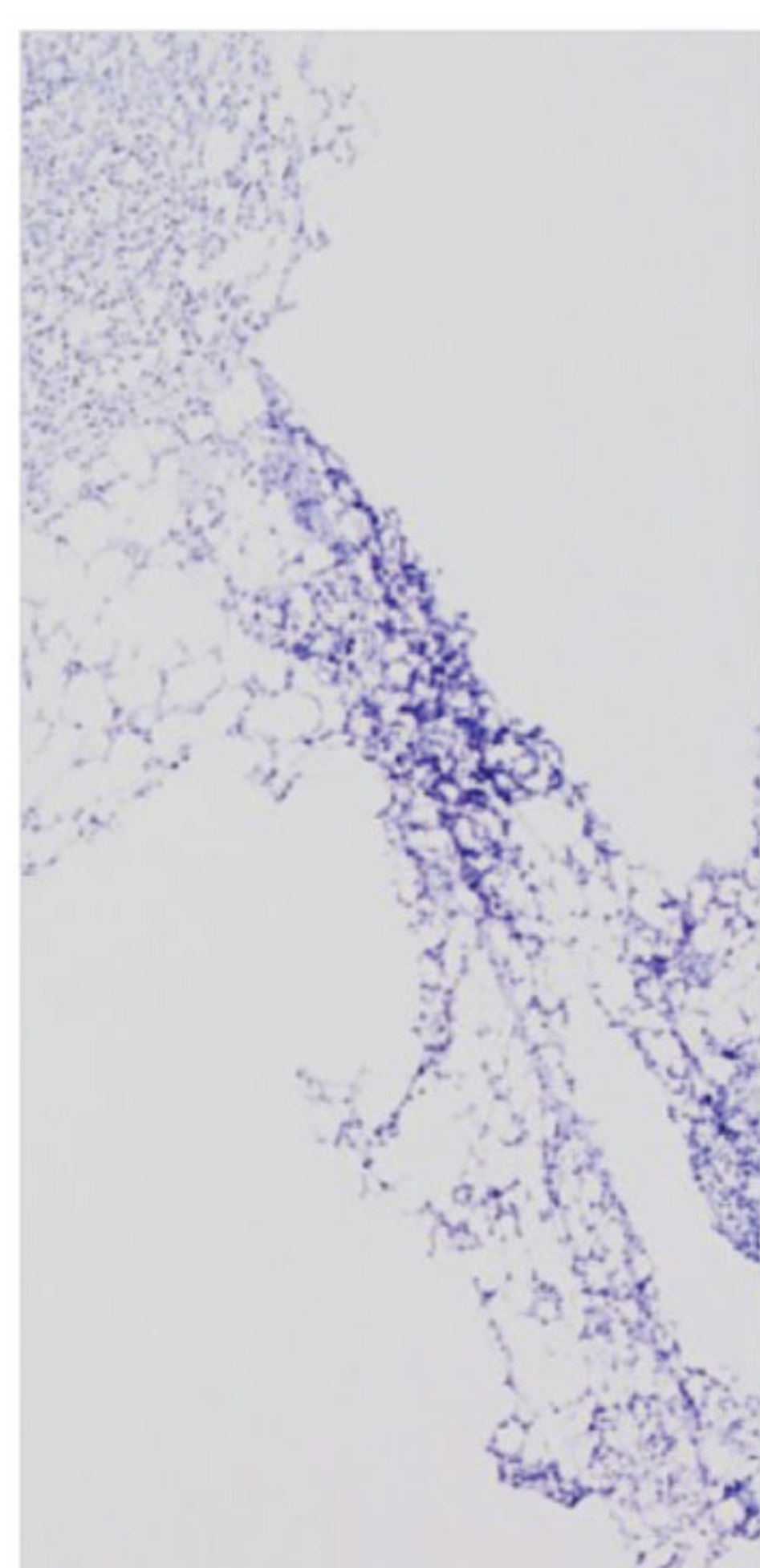
# VectaPlex workflows



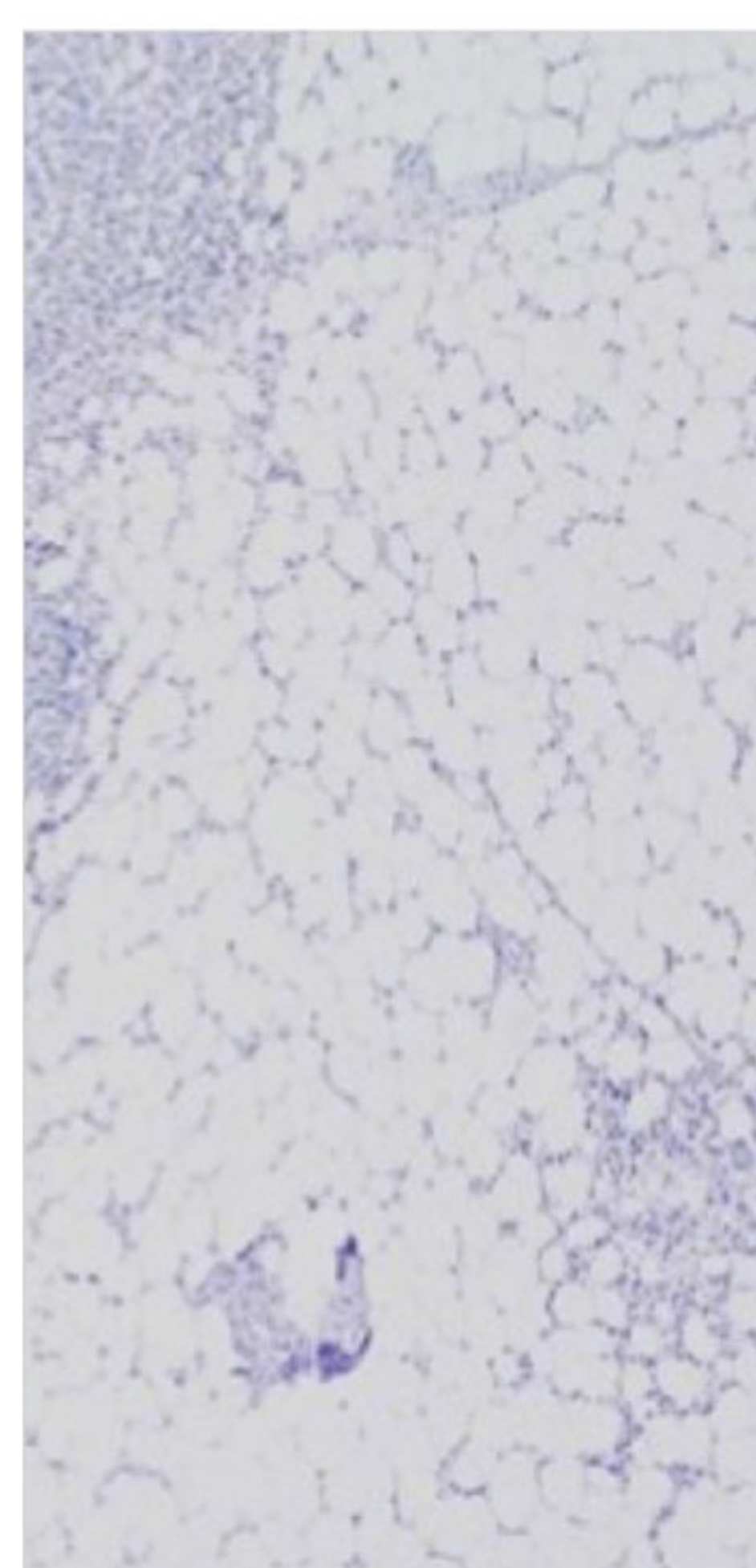
**VectaPlex IF workflow:** After IF staining and imaging the sample, VectaPlex is used to remove detection reagents in preparation for another cycle of staining. After all images have been collected, a composite image is formed from individual images.



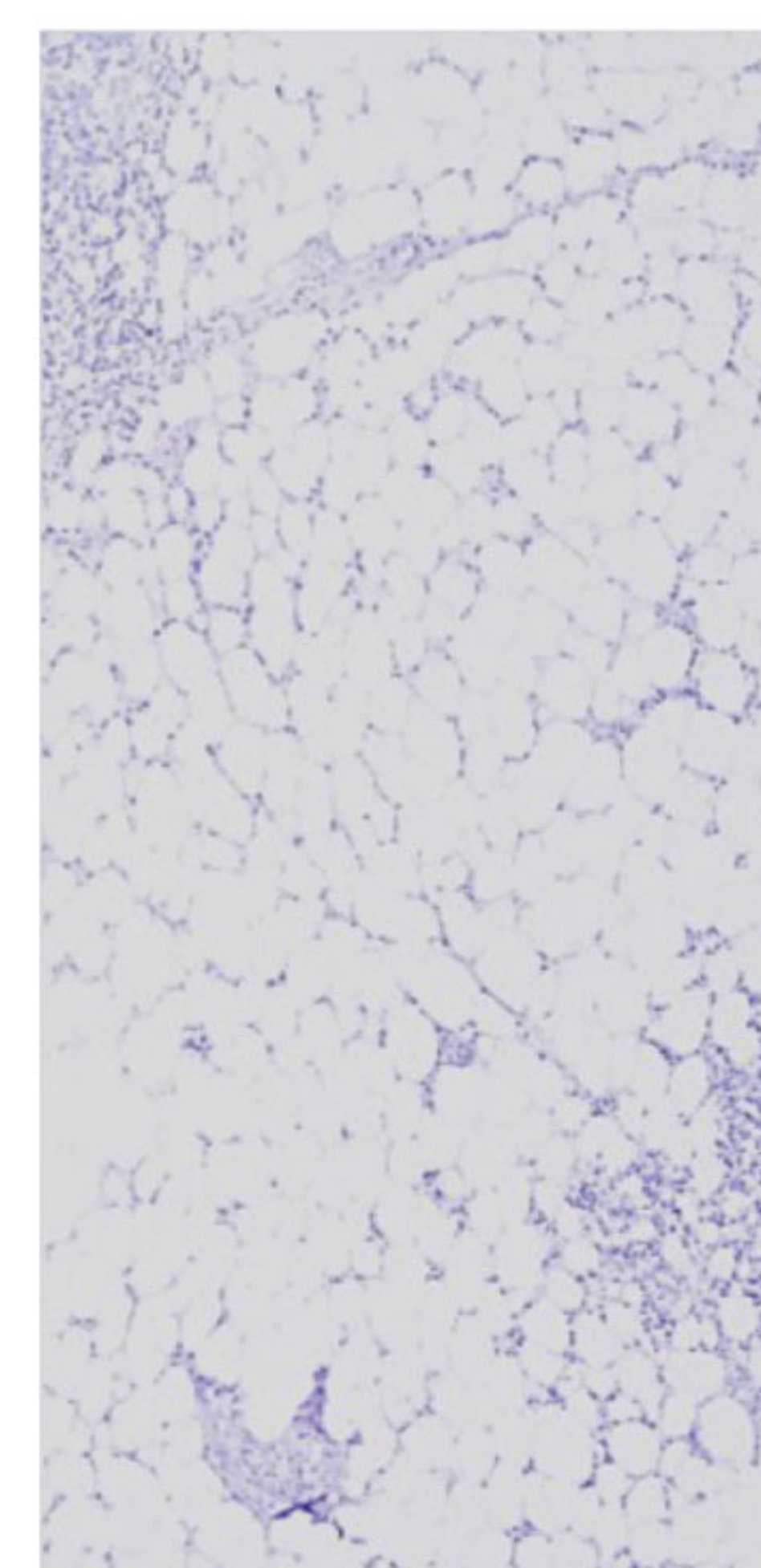
**VectaPlex TSA workflow:** After TSA staining and imaging the sample, VectaPlex is used to remove detection reagents in preparation for another cycle of staining. The tyramide signal is not removed by VectaPlex. A single image is collected after all cycles are complete.



After 6 rounds of microwave treatment



FFPE breast carcinoma, stained with hematoxylin & eosin for visualization



After 6 rounds of VectaPlex treatment

VectaPlex preserves tissue morphology of sensitive tissues after multiple rounds of treatment (above).

Product	Format	Unit size	Cat. No.
VectaPlex™ Antibody Removal Kit	Ready-to-Use	1 kit	VRK-1000

For more information please visit

[vectorlabs.com/products/vectaplex](https://vectorlabs.com/products/vectaplex)

© 2023 Vector Laboratories. All rights reserved.

For research use only. Not intended for animal or human therapeutic or diagnostic use.

DyLight™ is a trademark of Pierce Biotechnology, Inc., a Thermo Fisher Scientific company.

TrueView, VectaPlex, and Vector are trademarks of Vector Laboratories, Inc.

VL\_LIT3086\_Rev.00

